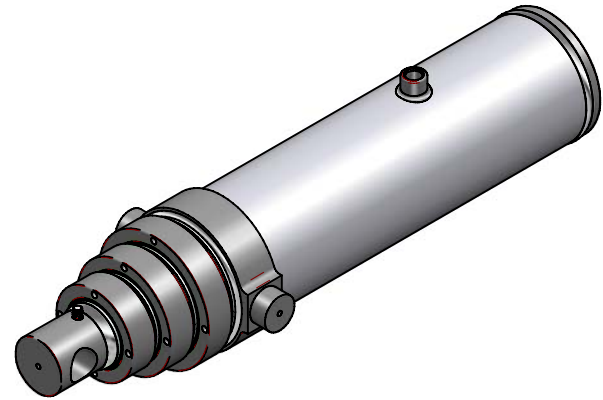
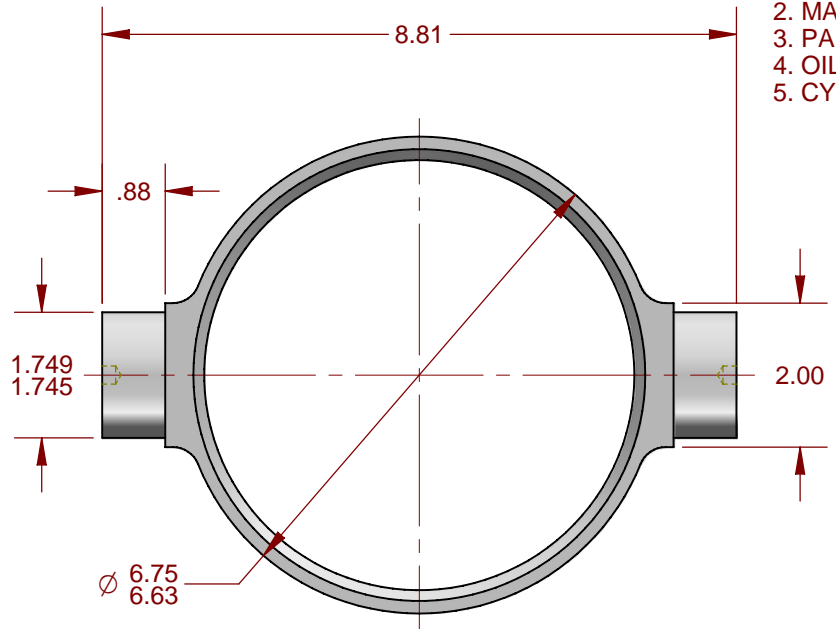


- NOTES:
1. SEAL KIT NUMBER: 53SA
  2. MAX. OPERATING PRESSURE: 2500 PSI.
  3. PAINT: UN1263 RED OXIDE PRIMER.
  4. OIL CAPACITY (GAL.) 1.37 RETRACTED; 4.48 EXTENDED
  5. CYLINDER WEIGHT (LBS) APPROX. 119

8.50 ±.12 RETRACTED  
 56.00 ±.24 STROKE  
 64.50 ±.36 EXTENDED



<b>SOUTHERN</b> HYDRAULIC CYLINDER, INC.	
3020 Lee Highway Athens, Tennessee 37303	
MACHINING TOLERANCES UNLESS OTHERWISE SPECIFIED	DRAWN BY
ONE PLACE .X = ±.1	CHECKED
TWO PLACES .XX = ±.03	APPROVED
THREE PLACES .XXX = ±.010	SCALE
FOUR PLACES .XXXX = ±.0010	
ALL ANGLES = ±2°	
BREAK ALL SHARP EDGES .010 X 45°	
DO NOT SCALE DRAWING FOR MACHINING DIMENSIONS	
<b>TELESCOPIC CYLINDER ASSEMBLY</b>	
DRAWING NO.	<b>5360TR</b>